

LEXINGTON ARTS & CRAFTS SOCIETY



CLASSES &
WORKSHOPS

FALL 2018



LEXINGTON ARTS & CRAFTS SOCIETY

Our new logo, Vision and Mission speak to our dedication to the arts and crafts that we have fostered since our start in 1935.

Vision

Enriching lives through the power of creation in art and craft.

Mission

LexArt is an educational non-profit collaborative that supports, encourages and inspires artisans at all stages of their creative journeys and promotes art in the community by providing studio space, gallery shows, classes, and workshops.

Learn. Create. Share.

130 Waltham Street
Lexington, MA 02421
781.862.9696

LexArt.org

Office hours: 9am to 4pm Monday-Friday

WELCOME TO OUR FALL CATALOG OF CLASSES AND WORKSHOPS!

JOIN THE EXCITEMENT at LexArt as we enter the fall, our busiest time of year. Classes, shows, sales, lectures and demonstrations all speak to our celebration of art and craft and our commitment to the community which has been coming together for over 80 years. To help carry us forward into the next 80 years, we have been busy planning changes that will take place over the coming year. The redesign of this catalog is just one of the many changes to come. Volunteers are busy at work on an enhanced website. Our building will soon be complemented by new signage and landscaping designed by Michael Wolfson, AIA, from Meander Studio. *We look forward to welcoming you on your next adventure into art.*

CONTENTS

CERAMICS	2
METALWORKING	3
PAINTING	7
DECORATIVE ARTS	13
PHOTOGRAPHY	15
POLYMER CLAY	16
WOODWORKING	17
KIDS' CLASSES	19
OPEN DRAWING & PAINTING	20
DEMOS & LECTURES	22
REGISTRATION FORM	23
MEMBERSHIP	24
2018-2019 CALENDAR	25

CERAMICS

DISCOVERY WITH CLAY

Peter Flister

(All Levels)

WEDNESDAYS 6:00pm - 9:00pm

FA18-C01

Fall Session 1 (8 Classes)

September 12 – October 31

FA18-C02

Fall Session 2 (8 Classes)

November 14 – January 16, 2019

(No class Nov. 21 & Dec. 26)

Society Member: \$286

Non-Member: \$331

Maximum # of Students: 10

Focus on the development and growth of skills utilizing wheel throwing and hand-building techniques. Also includes the study of surface treatments and glazing in the creation of functional and sculptural high fire stoneware. Excellent facilities and individual instruction by professional studio potter and Massachusetts licensed teacher.

Fee includes clay, glazes, firing.



TEEN POTTERY

Lynne Fisher

(Grades 7 -12)

THURSDAYS 6:00pm - 8:30pm

FA18-C03

Fall Session 1 (8 Classes)

September 13 – November 1

FA18-C04

Fall Session 2 (8 Classes)

November 8 – January 17, 2019

(No class Nov. 22 & Dec. 27)

Guild Member/Junior Member: \$286

Non-Member: \$331

Maximum # of Students: 10

Focus on both wheel and hand-building techniques, as well as decorating and glazing high fire stoneware. Classes are for 7th through 12th graders and all instruction is individualized from beginner to advanced.

Please inquire about openings and Junior Membership at 781 862-9696. Lynne will take names for a waiting list.

Junior Membership is required.

A student tool kit is recommended at a cost of \$15. Fee includes clay, glazes, firing.



CERAMICS SATURDAYS

Bet Lee

SATURDAYS 8:30am - 11:30am

FA18-C05

Fall Session 1 (8 Classes)

September 8 – October 27

FA18-C06

Fall Session 2 (8 Classes)

November 3 – December 29

(No class Nov. 24)

Guild Member/Junior Member: \$286

Non-Member: \$331

Maximum # of Students: 10

In this class students will focus on producing quality functional wares and creative sculptural pieces. Primary methods include wheel throwing and hand building. We will be concentrating on various techniques for finishing clay surfaces. There will be opportunities to explore mixed media projects and raku firing.

Students should bring the following to class: pin tool, cut off wire, basic wood tools, sponges, towel, and apron. Fee includes clay, glazes, firing.



METAL CLAY OPEN STUDIO

Michela Verani

(Beginner to Advanced)

MONDAYS 10:00am - 2:00pm

FA18-M01

September 10 – November 12 (10 Classes)

Metalworkers Guild Member: \$315

Society Member: \$345

Non-Member: \$390

Maximum # of Students: 10

Metal Clay is a relatively new product. It consists of microscopic particles of metal in a moist organic binder. It is pliable like clay and is then fired in a kiln to burn off the binder and fuse the particles into a solid piece of metal. In this metal clay open studio, projects will be presented that allow a beginning student to acquire the knowledge, skills and techniques necessary to work in metal clay. Projects will also allow intermediate and advanced metal clay students to increase their skills along with beginning students. Sample projects include hollow forms from simple 2-piece forms for beginners to multi-level complex hollow forms for intermediate and advanced students.



METALWORKING

ENAMELING

Kara Hickey

(Beginner to Intermediate)

MONDAYS 6:30pm - 9:30pm

FA18-M04

September 17 – November 26

(No class Oct. 8) (10 Classes)

Metalworkers Guild Member: \$236

Society Member: \$266

Non-Member: \$311

Maximum # of Students: 10

This class is an introduction to various styles of enameling techniques. We will start by enameling on copper using opaque colors. As the class progresses, we will advance to using transparent enamels on fine silver.

Metalworking experience is required for this class.



METALSMITHING OPEN STUDIO

Joy Raskin

(All Levels)

WEDNESDAYS 2:30pm - 5:30pm

FA18-M16

September 19 – November 28

(No class Nov. 21) (10 Classes)

Metalworkers Guild Member: \$236

Society Member: \$266

Non-Member: \$311

Maximum # of Students: 10

This class is more of a directed open studio so that students may work on their own projects. Demos will be given as the students request. We will focus mainly on improving soldering skills, stone setting styles and design. Joy will work with anyone who wants to try something new. High school students encouraged.



METALWORKING

METALSMITHING

Joy Raskin

(Intermediate to Advanced)

WEDNESDAYS 6:30pm - 9:30pm

FA18-M02

September 19 – November 28

(No class Nov. 21) (10 Classes)

Metalworkers Guild Member: \$236

Society Member: \$266

Non-Member: \$311

Maximum # of Students: 10

This class is more of a directed open studio so that students may work on their own projects. Demos will be given as students request and stone setting will be a big part of this class. We will focus mainly on improving soldering skills, stone setting styles and design. Basic jewelry making skills are required for this class.

INTENSIVE DIRECTED WORKSHOP

Laurie Savage

(Intermediate to Advanced)

THURSDAYS 10:00am - 3:00pm

FA18-M07

September 13, 20, October 4, 18, 25,

November 15, 29, December 6, 13

(9 Classes)

Metalworkers Guild Member: \$349

Society Member: \$369

Non-Member: \$404

Maximum # of Students: 10

This is an opportunity for adult students to work on independent projects. Answers to questions and guidance from the instructor will be based on the needs and interests of the students. Laurie also has great bench tips to help students create successful projects.

(Non-Guild Members must get the instructor's approval to take this class.)

Contact the LexArt Office at 781-862-9696.)



METALWORKING

SILVERSMITHING AND JEWELRY

Liz Check

(Intermediate to Advanced)

THURSDAYS 6:30pm - 9:30pm

FA18-M03

September 6 – November 8 (10 Classes)

Metalworkers Guild Member: \$236

Society Member: \$266

Non-Member: \$311

Maximum # of Students: 10

Intermediate level adult students will be interested in improving craftsmanship in silversmithing techniques. These include: sawing, filing, hammering, forming, sanding, surface embellishment, soldering, chain-making, bezel setting, etching, keum-boo, finishing and polishing. Demonstrations will be provided for all techniques, focusing on proper use of tools, including flexible shaft, rolling mill and buffing. Instructor will assist students in project development designed to incorporate these techniques. Students are encouraged to bring design ideas and pictures to class.

MAKING WAX MODELS

Theresa Carmichael

2-DAY WORKSHOP

FA18-M06

SATURDAY & SUNDAY September 15 & 16

10:00am - 5:00pm

Metalworkers Guild Member: \$112

Society Member: \$126

Non-Member: \$150

Maximum # of Students: 10

The lost wax casting process also known as *cire perdue* has been used for centuries to transform wax into jewelry which cannot be made in sheet metal. This class is an opportunity to finish projects or improve your skills in every aspect of wax making. Techniques include: carving, lathe work, additive processes, and making settings for unusually shaped stones.

Materials fee of \$20 payable to the instructor.



PAINTING

WATERCOLOR PAINTING

Sue Nordhausen

MONDAYS 10:00am - 12:30pm

FA18-P01

October 1, 8, 22, 29, November 5, 12
(6 Classes)

Painters Guild Member: \$176
Society Member: \$187
Non-Member: \$222

Maximum # of Students: 12

Experienced teacher Sue Nordhausen's classes are welcoming and enriching for the novice or experienced watercolor enthusiast. Students are encouraged when using reference materials to interpret rather than copy, enhancing what is seen in nature. Emphasis is placed on the use of value to draw the eye to the center of interest. Students learn techniques of mixing rich colors directly on paper as well as layering of colors or glazing. Each class begins with a demonstration and goals. Individual consultation is provided to support the student's endeavors.



PAINTING HORSES, WILDLIFE & THE NATURAL WORLD

Robert Butler

(All Levels)

MONDAYS 1:00pm - 3:00pm

FA18-P10

September 10 – October 22
(No class Oct. 15) (6 Classes)

Painters Guild Member: \$159
Society Member: \$165
Non-Member: \$180

Maximum # of Students: 10

Throughout history people have been captivated and inspired by the beauty of the natural world. Students are encouraged to learn the essential painting techniques needed to render these magnificent animals and their habitats. Students of all levels will gain confidence and expand skills with classroom demos and individual instruction. Enjoy the study of nature's color palette, animal anatomy, habitat landscapes, and composition and create exciting wildlife artwork. Participants are welcome to work on pet portraits in these classes.

Robert Butler is known for his relaxed, efficient teaching style, with art on display at the Smithsonian, The Discovery/Learning Channels and private collections worldwide

Contact Robert Butler at (978) 283-7186 for class supply list.



PAINTING

ACRYLICS

Maris Platais

TUESDAYS 9:30am - 12:00pm

FA18-P02

September 11 – November 13
(No class Oct. 16) (9 Classes)

Painters Guild Member: **\$300**
Society Member: **\$315**
Non-Member: **\$360**

Maximum # of Students: 12

Experience the magic and versatility of this fast-drying medium. Through demonstrations and one-on-one critiques, Maris will bring out the best in each student. Color mixing, brush work and composition will be emphasized, using imagination and reference materials of your choice. Oil painters are welcome.

WATERCOLOR PAINTING

D'Ann Brownrigg

TUESDAYS 12:30pm - 3:00pm

FA18-P03

September 11 – November 6
(No class Oct. 16) (8 Classes)

Painters Guild Member: **\$217**
Society Member: **\$232**
Non-Member: **\$277**

Maximum # of Students: 12

Learn to relax and focus on the joining of water and paint on paper to produce colorful, lively, transparent paintings. Paint a subject that interests you in a way that reflects your own personality. Still lifes and reference photos are available or bring your own materials. We will discuss basic techniques and design strategies and usually begin with a short demo.

**Contact the LexArt Office at 781-862-9696.
for class supply list.**



PAINTING

BEGINNING CHINESE CALLIGRAPHY & PAINTING

Son-Mey Chiu

TUESDAYS 4:00pm - 5:30pm

FA18-P14

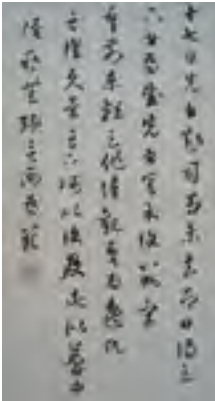
September 11 – November 6
(No class Oct. 16) (8 Classes)

Painters Guild Member: \$150
Society Member: \$156
Non-Member: \$176

Maximum # of Students: 12

For the first four lesson students will be guided to practice traditional Chinese Calligraphy from manuals based on the work of important calligraphers of the past. Students will spend the next four lessons learning the first standard series of traditional Chinese Painting: “The Four Gentlemen.” Students will be guided to learn the basic techniques for painting the plum, orchid, chrysanthemum and bamboo. Chinese ink and water will be used.

Although the course is designed for middle school and high school students, students of all ages and backgrounds are welcome.



LANDSCAPE OIL PAINTING

Peter Bain

WEDNESDAYS 9:30am - 12:00pm

FA18-P19

September 19 – November 14
(No class Oct. 17) (8 Classes)

Painters Guild Member: \$217
Society Member: \$232
Non-Member: \$277

Maximum # of Students: 12

This class is designed for painters of any experience. We will paint in the studio from photographs. Our subjects will be mainly, but not limited to, landscapes. Other subjects may also include animals, figures and still lifes.

The goal of this class is to teach fundamentals of composition, shape and color. We will learn to simplify design, see big shapes, control edges, use color and shape to create a beautiful painting. Class begins with a demonstration and brief talk followed by one on one instruction. Students are encouraged to continue on the paintings between classes. A group critique will be held at beginning of the following class.



PAINTING

PAINTING FOUNDATIONS III

Jill Pottle

THURSDAYS 1:30pm - 4:30pm

FA18-P05

September 20 – November 8
(No class Oct. 18) (7 Classes)

Painters Guild Member: **\$263**
Society Member: **\$278**
Non-Member: **\$323**

Maximum # of Students: 12

Learn how to paint with oil or acrylic. This class gives the basics for the student who needs more technical understanding. This class will address how to keep a pallet and mix colors, some color theory, application techniques, and use of brushes. Composition and design issues will be included using a variety of subject matter: still life, landscape and portrait. Come and learn how to get the paint moving and see the results!



PORTRAIT EVENING CLASS

Jill Pottle

(Beginning and Intermediate levels)

THURSDAYS 5:30pm - 8:30pm

FA18-P06

September 20 – November 8
(No class Oct. 18) (7 Classes)

Painters Guild Member: **\$303**
Society Member: **\$318**
Non-Member: **\$363**

Maximum # of Students: 12

Have you always wanted to do portraits and did not know where to start? Have you done portraits and would like a better understanding of techniques in order to improve your skills? This is the class for you. During the first half of the class students will learn basic anatomy of the skull, muscles and neck. Attention will be given to how these features wrap around the form. Initially we will work from photographs, using pencil, charcoal and chalk to help create a strong structure, while developing the shapes in order to achieve resemblance to the subject. The second half of the class we will use a live model to pose for life drawing. Model will be available for only 3 of the weeks. Cost includes model fee.

Beginners welcome but must have at least one general basic drawing class.



PAINTING

OIL PAINTING

Pearl McCarthy

FRIDAYS 1:30pm - 4:00pm

FA18-P15

September 14 – November 9
(No class Oct. 19) (8 Classes)

Painters Guild Member: **\$285**
Society Member: **\$300**
Non-Member: **\$345**

Maximum # of Students: 12

In this class, students work with flowers and fruit to paint a dynamic still life. Students of all levels will improve their understanding of color temperature, value, drawing, edges and composition. If you have always wanted to try oil paints, this is a great place to begin. Pearl McCarthy will start with a demonstration for beginners and provide students with individual attention as needed. Participants will learn to paint peonies, sunflowers, roses, and other flowers. Pearl will create a fun and supportive learning environment for all her students.



AIR BRUSHING:

A Remarkable Style of Painting

Robert Butler

2-DAY WORKSHOP

FA18-P12

MONDAYS September 10, 17
6:30pm - 8:30pm

Painters Guild Member: **\$66**
Society Member: **\$72**
Non-Member: **\$87**

Maximum # of Students: 12

Lifelong teacher and artist Robert Butler will guide students in the fundamental through advanced techniques of the versatile and unique medium of airbrush painting. Whether you want to paint murals, pottery, restore miniatures and antiques. This technique can be applied to custom paint clothing, hot-rods, even fingernails! Robert Butler's relaxed but thorough instruction will provide you with a solid foundation in the unique medium of the airbrush. All curriculum-based texts are provided.



PAINTING

CHINESE BRUSH PAINTING WORKSHOP

Ma Qingxiong

2-DAY WORKSHOP

FA18-P13

SATURDAY & SUNDAY September 29 & 30

10:00am - 3:00pm

Painters Guild Member:	\$150
Society Member:	\$156
Non-Member:	\$176

Maximum # of Students: 12

This course will introduce the basics of Chinese brush painting. Students will explore landscape with the traditional Chinese brush painting techniques. Using freehand brushwork, the emphasis will be on expressiveness, individual interpretation and abstraction through exaggeration. Students will use ink, watercolor and gouache on rice paper to create wonderful visual effects. This class will learn how to represent trees, rocks, as well as simple paintings of autumn and/or winter scenes.

Feel free to bring lunch.



CHINESE BRUSH PAINTING WORKSHOP

Son-Mey Chiu

1-DAY WORKSHOP

FA18-P24

SATURDAY October 6

9:30am - 11:30am

Painters Guild Member:	\$32
Society Member:	\$35
Non-Member:	\$45

Maximum # of Students: 12

A two-hour workshop demonstrating the brush techniques of painting a traditional Chinese flower and bird painting. Students of all ages and backgrounds are welcome. Practitioners of pottery are especially encouraged to attend.



PAINTERS AS PRINTMAKERS – WITHOUT A PRESS!

Carolyn Letvin

1-DAY WORKSHOP

FA18-P18

SUNDAY November 11

10:00am - 4:00pm

Painters Guild Member:	\$107
Society Member:	\$111
Non-Member:	\$126

Maximum # of Students: 12

This one day workshop will cover a print-making process that any painter can use. Utilizing your current painting supplies (Oils for this class), and some simple tools, you can create beautiful, unique prints without a press! The day will include classroom time demonstration and critiques as well as time for printing your own images. Tools needed for the printing process will be supplied. We will work from photographs or looking out the studio windows. Please bring your usual oil painting supplies and photos you would like to use to make images. All levels of experience will be accepted.

Class from 10am to 4pm with a lunch break.



DECORATIVE PAINTING WITH ACRYLICS

Anne Hunter

(All Levels)

WEDNESDAYS 6:00pm - 8:30pm

FA18-D02

September 19 – October 10 (4 Classes)

Decorative Arts Guild Member:	\$108
Society Member:	\$113
Non-Member:	\$123

Maximum # of Students: 10

Learn the fundamental skills of decorative painting with acrylic paints. Each student will develop painting skills and experiment with mediums to create texture and dimension and learn about new products. Learn how acrylic paints and mediums work together and the basic elements needed for painting on various surfaces including wood, clay, and paper.

Paints and surfaces provided. Materials fee \$25.00, payable to the instructor.



DECORATIVE ARTS

SCARVES TO DYE FOR

Nancy Schlecht & Mary McDonald

1-DAY WORKSHOPS

(All Levels)

FA18-D03

THURSDAY October 4

6:30pm - 9:30pm

FA18-D04

WEDNESDAY November 7

6:30pm - 9:30pm

Society Member: \$40

Non-Member: \$45

Maximum # of Students: 12

Learn how to apply color to a white silk scarf and create your own fashion statement in this three-hour workshop. Experiment with colors and simple techniques on a silk handkerchief and then on a 8" X 54" silk scarf. The dyes are protein-based, non-toxic and instant set. Walk out wearing a unique and personal piece of wearable art.

Class cost includes \$10 of materials.

There is an option to purchase and dye an additional scarf.



DRAB TO FAB

Small Furniture Workshop

Anne Hunter

1-DAY WORKSHOP

(All Levels)

FA18-D01

SUNDAY September 23

9:30am - 3:30pm

Decorative Arts Guild Member: \$67

Society Member: \$72

Non-Member: \$82

Maximum # of Students: 10

Do you have a small piece of furniture that is just waiting for a face lift? Are you confused about all the new products that advertise "quick and easy" furniture painting solutions? Join us and get some help in designing a new, updated look. Bring a small, easy to carry, home accessory piece such as a small table, chest, chair, trunk, bench, or jewelry box that you would like to revitalize, photos of decorative designs for reference, or fabric swatches that may influence your design. During the class you will paint with your choice of colors and embellish by distressing, glazing, or some stenciling. Add a protective layer of clear wax or varnish. Remember to wear old clothes and be prepared to have some fun.

A \$45 materials fee covering all paints, varnishes, brushes, and all tools is due to the instructor at time of class.



PHOTOGRAPHY

DIGITAL PHOTOGRAPHY

Al Hiltz

(Beginners to Intermediate)

TUESDAYS 7:00pm - 9:00pm

FA18-X01

**September 11 – November 6
(No class Oct. 16) (8 Classes)**

Society Member: \$289

Non-Member: \$307

Maximum # of Students: 12

In this class, we will cover the basics of digital photography in an introductory but thorough manner. It is appropriate for those that have no previous experience with a digital camera, as well as those that know the basics, but want to take their photography to the next level. Students will learn about camera settings and controls, current technology, composition, and the artistic side of digital photography. Short take home assignments will help you become comfortable with your new skills, and we'll spend time reviewing your photographs as a group. An optional text will also be used as a permanent reminder of the material covered.

Additional material costs approximately \$20 - \$25 to be paid to the instructor.



TABLETOP STUDIO PHOTOGRAPHY

Nicole Mordecai

1-DAY WORKSHOP

FA18-X02

**SUNDAY September 30
9:30am - 2:30pm**

Society Member: \$ 97

Non-Member: \$112

Maximum # of Students: 12

Do you need photos for your website, social media feeds or promotional materials? Learn to create photos of your artwork for an online portfolio or to preserve your work through digital images. Photograph a variety of different objects and experiment with different lighting conditions. Design and photograph a still life, then photograph your own objects. Students are encouraged to bring a selection of items for photographing as well as small items for a still life.

Bring any type camera you are familiar with including smart phone. If you bring DSLR or point-and-shoot camera please be aware that there will be limited time for the instructor to help adjust settings.

Class cost includes \$45 materials fee for soft box, lights, table tripod, and backdrops. (Requires 2 weeks preorder so please register promptly.)



POLYMER CLAY & BEADING

POLYMER CLAY: BEGINNING AND BEYOND

Various Instructors from the
Polymer Clay & Beading Guild

SATURDAYS 9:30am - 2:00pm

FA18-F01

September 15 – October 6 (4 Classes)

Polymer Clay & Beading

Guild Member: \$148

Society Member: \$153

Non-Member: \$178

Maximum # of Students: 6

Come and explore a new and powerful medium. Come with ideas of your own or find inspiration in class. Polymer is a versatile, contemporary material which requires little in the way of specialized equipment. You will create both decorative and functional items that are unique to you. This is the perfect opportunity to learn about Polymer and learn new techniques. Prior experience is helpful but not at all necessary. A variety of techniques will be explored depending on class interests and experience.

Class cost includes supplies.



Polymer Clay & Beading Guild

Members of the Polymer Clay & Beading Guild come from many different backgrounds but all share a strong interest in the arts. We enjoy learning and practicing our skills in polymer clay and beadwork. Guild meetings provide an opportunity twice a month to work together on a project, try out a new technique or plan a field trip. We look forward to show-and-tell at meetings, where we show off our newest creations, get advice from fellow members and enjoy seeing a new book or magazine that a member has brought in.

Polymer clay is a man-made material used as an artistic medium. It can be manipulated to take on many shapes and can be mixed to create an almost infinite range of custom colors. It is often used for strong but lightweight jewelry and sculptural pieces. One of the exciting things about polymer clay is the versatility of the material and the nearly endless techniques to investigate.

Beadwork created by Guild members uses a variety of stitches, such as Peyote, Herringbone, Right Angle Weave or Spiral Rope, to create jewelry with beads, and crystals of many different sizes and shapes. Beaded work may also use beads that are hand-felted or lampwork glass beads produced by our talented artists. The end result is often a fusion of multiple materials to produce unique jewelry or other works.

WOODWORKING

WOODCARVING

Jane Layton

WEDNESDAYS 9:30am - 12:00pm

FA18-Y01

September 12 – November 14
(No class Oct. 17) (9 Classes)

Society Member: \$194

Non-Member: \$218

MAXIMUM # OF STUDENTS: 10

Student choice; From a basswood cut-out, participants will create a small songbird by carving with hand tools and painting with acrylics OR carve another small object (fish, flower, relief) with hand tools.

Any questions, contact Jane Layton at 781-259-9036. New students, please bring \$15 for materials.



TRANSFORMING ROUGH SAWN LUMBER INTO FURNITURE-GRADE STOCK

Steve McKenna

1-DAY WORKSHOP

FA18-Y04

SATURDAY September 22
10:00am - 12:00pm

Woodworkers Guild Member: \$30

Society Member: \$35

Non-Member: \$45

Maximum # of Students: 8

This workshop is a real-time tutorial on squaring rough sawn planks into straight lumber, including a discussion on lumber selection and size, dealing with twisting, cupping, bowing, and grain direction, for maximum yield to useable material for fine woodworking. This workshop takes place in the Woodworkers Guild workshop with real-time demonstrations on handling all the challenges of the rough sawn stock.



WOODWORKING

PUTTING CURVED LINES IN YOUR FURNITURE DESIGN

Steve McKenna

1-DAY WORKSHOP

FA18-Y05

SATURDAY September 29

10:00am - 12:00pm

Woodworkers Guild Member: \$30

Society Member: \$35

Non-Member: \$45

Maximum # of Students: 8

Historically, straight lines and square joints have been common in furniture, because they are easy to make on a production basis. A curved line, however, is much more pleasing to the eye. Lightening up a piece with a curve without effecting its structural integrity is a way of defining a piece as having been made by a craftsman. Spend a morning with a craftsman who has made curves his signature!

ROUTER 101

Andrew Teixeira

1-DAY WORKSHOP

FA18-Y03

SUNDAY September 30

10:00am - 4:00pm

Woodworkers Guild Member: \$ 97

Society Member: \$102

Non-Member: \$117

Maximum # of Students: 8

Routers enable you to do precise work quickly. In this class, professional cabinetmaker Andrew Teixeira will make a small bookcase that demonstrates a variety of ways the router can be used for quick results. Andrew gives students a clear method to approach the router so they can get consistent results safely on their own projects. This class will provide a strong foundation for those starting in woodworking and will challenge those with more advanced skills.

You can view a portfolio of Andrew's work on his website, anamericanartisan.com, or on his YouTube channel, An American Artisan.

Cost includes \$15 for materials.



KIDS' CLASSES

PAINTING HORSES, ANIMALS & DINOSAURS!

Robert Butler

MONDAYS 4:00pm - 5:30pm

FA18-P11

Grades 6-8

September 10 – October 22

(No class Oct. 15) (6 Classes)

Society Member: \$150

Non-Member: \$165

Maximum # of Students: 10

Throughout history people have been captivated and inspired by the beauty of the natural world. Students are encouraged to learn the essential painting techniques needed to render these magnificent animals and their habitats. Students of all levels will gain confidence and expand skills with classroom demos and individual instruction. Enjoy the study of nature's color palette, animal anatomy, habitat landscapes and composition and create exciting wildlife artwork. Participants are welcome to work on pet portraits in these classes.

Robert Butler is known for his relaxed, efficient teaching style, with art on display at the Smithsonian, The Discovery/Learning Channels and private collections worldwide.

Contact Robert Butler at (978) 283-7186 for class supply list.



MAKING COMICS!

Zoe Schein

THURSDAYS

September 13 – November 8

(No class Oct. 18) (8 Classes)

FA18-P16

Grades 3-5

1:30pm - 3:00pm

FA18-P09

Grades 6-8

3:30pm - 5:00pm

Society Member: \$165

Non-Member: \$190

Maximum # of Students: 10

This class will explore the basics of comics as a medium – from idea to execution. The course will focus on storytelling and drawing skills. We will learn about developing stories and characters, building and drawing figures, environments. We will deal with framing and composing panels that push your story forward will be covered. Whether comedic or dramatic, fictional or true-to-life, poetic or action-driven, students will learn the skills to tell their stories their way.



OPEN DRAWING & PAINTING

OPEN FIGURE DRAWING STUDIO

Coordinated by Eric Peterson

WEDNESDAYS 6:30pm - 9:00pm
September 12, 26, October 10, 24,
November 7, 14

Cost per class session

Society Member: \$15

Non-Member: \$20

Maximum # of Students: 12

This class is open to walk-ins and/or Guild members. Students practice the art of drawing the nude figure in a relaxed and informal setting. There is no formal instruction. All levels of experience and the use of all types of materials – with the exception of oil-based – are encouraged. The class usually begins with a series of short poses by the model building up to poses as long as 20 minutes in duration.

RSVP: epeterson753@gmail.com

FRIDAY MORNING OPEN PORTRAIT GROUP

Coordinated by SaraSue Pennell

FRIDAYS 9:30am - 12:30pm
September 7 – November 16
(No session Oct. 19)

Cost per class session

Society Member: \$15

Non-Member: \$20

Maximum # of Participants: 12

Group members paint with each other in relaxed atmosphere.

The group shares the costs of models.

NO REGISTRATION REQUIRED.

**For additional information,
contact SaraSue Pennell at 781 862-8180**



OPEN DRAWING & PAINTING

FRIDAY NIGHT OPEN PAINTING GROUP

(MEMBERS ONLY)

Coordinated by Cathy Keller

FRIDAYS 6:30pm - 9:00pm
September 7 – November 16
(No session Oct. 19)

Maximum # of Participants: 10

LexArt members paint with one another in a relaxed, congenial environment.

(No instruction. There may be costs associated with bringing in professional demonstrators during this period to be determined by the group.)

NO REGISTRATION REQUIRED.

Please contact the Office to inquire about joining the Society 781-862-9696 or by email: lacs.lexington@verizon.net

SUNDAY NIGHT OPEN PAINTING GROUP

(MEMBERS ONLY)

Coordinated by Leslie Safford

SUNDAYS 4:00pm - 7:00pm
September 9, 16, 23, 30, October 7, 28,
November 11

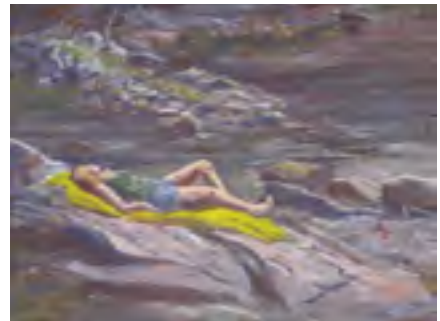
Maximum # of Participants: 10

LexArt members paint with one another in a relaxed, congenial environment.

(No instruction. There may be costs associated with bringing in professional demonstrators during this period to be determined by the group.)

NO REGISTRATION REQUIRED.

Please contact the Office to inquire about joining the Society 781-862-9696 or by email: lacs.lexington@verizon.net





**Big, Loose, and Easy
Watercolor Florals
with *Dustan Knight***

SUNDAY September 16, 2018
dustanknight.com



**Temperature, Value, and Chroma:
The Color Architecture
of the Portrait
with *Emanuela DeMusis***

SUNDAY March 10, 2019
emanuelademusis.blogspot.com



**Not So Still:
Still Life with *Jill Pottle***

SUNDAY October 7, 2018
pottleart.com



**Reflected Lights
in City Night Scenes:
Watercolor with *Wendy Hale***

SUNDAY April 14, 2019
wendyhalestudio.com



**Painting the Landscape in
Thick & Rich Oils with *Peter Bain***

SUNDAY January 20, 2019
dailypaintworks.com

REGISTRATION FORM

**Complete all information below and print neatly.
Enclose payment(s) with registration form.**

Use separate checks for each class and print class on your check. LexArt cannot accept credit/debit cards for walk-in or mail-in registration.

Make checks payable to LexArt and bring or mail registration to:

**Lexington Arts & Crafts Society
130 Waltham Street
Lexington, MA 02421**

MEMBER STATUS

Guild Society Supporting Corporate NARM Junior Non-Member

STUDENT INFORMATION

NAME:	EMAIL:	
STREET:		
CITY:	STATE:	ZIP:
HOME PHONE:	CELL:	

CLASS #1

COURSE NAME:	INSTRUCTOR:
COURSE NUMBER:	DATE OF CLASS:
LATE REGISTRATION FEE \$15:	DAY OF CLASS:
TOTAL:	

CLASS #2

COURSE NAME:	INSTRUCTOR:
COURSE NUMBER:	DATE OF CLASS:
LATE REGISTRATION FEE \$15:	DAY OF CLASS:
TOTAL:	

NARM members and Corporate Sponsors pay at Society Member rates.

Class size is limited, so register promptly.

Start dates are subject to change.

Students will be notified via email if a class is full or cancelled.

MEMBERSHIP

Come Join Us!

The Lexington Arts & Crafts Society has two levels of membership: Sustaining and Guild.

All members enjoy:

- Discounts on LexArt classes
- Membership in NARM, the North American Reciprocal Museum Association, offering free entry to museums such as the Peabody Essex Museum, Harvard Art Museums, DeCordova Museum, and over 900 other museums in North America
- Discounts at some local merchants
- Discounted theater tickets through Stage Source

Guild members (Ceramics, Decorative Arts/Basketry, Metalworkers, Needle Arts, Painters, Photography, Polymer Clay/Beaders, Weavers, Woodworkers) **enjoy:**

- Additional discounts on classes
- Access to studios
- Participation in sales and exhibits

Connect.

LexArt reaches out to the community, sponsoring an annual exhibit of regional high school artists in its gallery, with scholarships and awards, offering free exhibits year-round including the biennial State of Clay juried exhibit and Art-A-Blooming (jointly with the Lexington Garden Club), and the Bowls for Hunger program that benefits the Lexington Interfaith Food Pantry.

Mostly, LexArt provides a place where artists at any level may gather, learn, work, and share their knowledge.

Donate.

The Society, a 503(c)(3) non-profit, is in the midst of a campaign to raise funds for a new chair lift to keep our building accessible. Additional funds are needed to complete our new building signage.

To join or to make a donation, visit our website: LexArt.org

2018-2019 CALENDAR

LexArt Gallery and Event Schedule

SEASONAL ARTISAN MARKETS

ANNUAL FALL FAIR	OCT 19, 20, 21, 2018
HOLIDAY MARKETPLACE	NOV 30 - DEC 23, 2018
LEXINGTON OPEN STUDIOS	APRIL, 2019 TBA
ARTISAN MARKET	JULY, 2019 TBA
Visit The Shop at LexArt. Open year-round (Office/Studio Entry: 9 to 4 Weekdays)	

EXHIBITS

ART - A - BLOOMING	SEPT 14, 15, 16, 2018
KOREAN CULTURAL SOCIETY OF BOSTON SHOW	SEPT 22 - OCT 7, 2018
INSTRUCTORS & STUDENT SHOW	OCT 27 - NOV 11, 2018
REGIONAL HIGH SCHOOL ART SHOW	JAN 12 - 27, 2019
THE ART OF NEGOTIATION (Guild Collaborative Show)	FEB 2 - 17, 2019
PAINTERS GUILD SHOW	FEB 23 - MAR 10, 2019
NEEDLE ARTS GUILD SHOW	MAR 16 - 31, 2019
WOOD & WEAVER GUILD SHOW	APR 6 - 21, 2019
POLYMER & BEADING GUILD SHOW	APR 27 - MAY 12, 2019
METALWORKERS & PHOTOGRAPHY GUILD SHOW	MAY 18 - JUNE 2, 2019
CERAMICS GUILD SHOW	JUNE 8 - 23, 2019

CLASSES

Go to LexArt.org to see the current schedule



**LEXINGTON
ARTS & CRAFTS
SOCIETY**

**130 Waltham Street
Lexington, MA 02421
781.862.9696**

LexArt.org

Office hours: 9am to 4pm Monday - Friday

Lexington Arts and Crafts Society is a non-profit 501(c)(3) organization